



# Dresser D630

## Diaphragm Replacement Meter

Expanding on the proven performance of the Dresser D800 and D1000s, the Dresser D630 provides a drop-in replacement for a comparable diaphragm meter. With 8¼ inch connection centers and a start rate comparable to a 250 Class diaphragm meter, the D630 provides an enhanced solution to a common problem.



Diaphragm replacement meter for 600 class meters

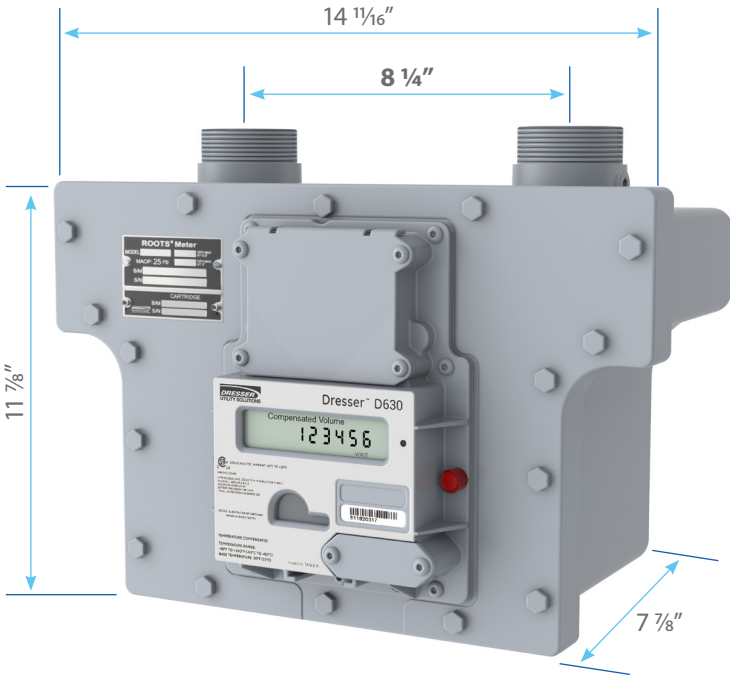


Drop-in replacement



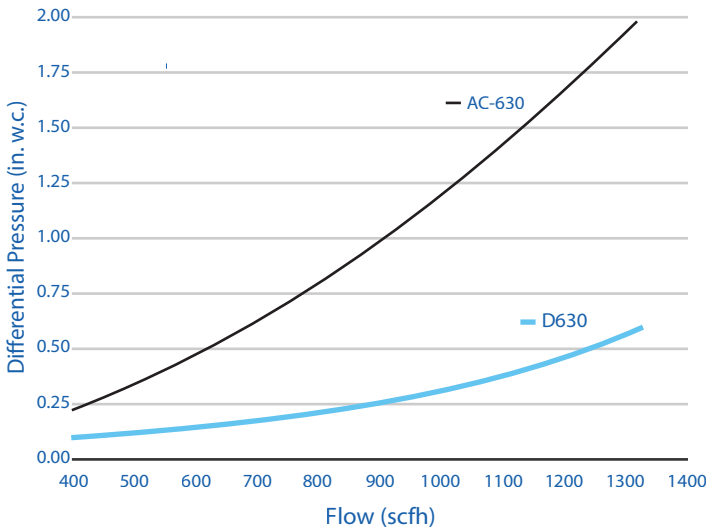
Meets/exceeds AC-630 Performance

# Dresser D630 Diaphragm Replacement Meter



The Dresser D630 operates at a lower pressure drop as compared to typical diaphragm meters.

## Capacity Curve @ .25 Inlet and 0.6 s.g. Gas



**Dresser Measurement**  
 16240 Port Northwest Drive  
 Houston, TX 77041  
 T: 1-800-521-1114  
 F: 1-800-335-5224

© 2025 Natural Gas Solutions North America, LLC – All rights reserved. Dresser Utility Solutions reserves the right to make changes in specifications and features shown herein, or discontinue the product described at any time without notice or obligation. Contact your Dresser Utility Solutions representative for the most current information. The Dresser Logo and all Trademarks containing the term "Dresser" are the property of Dresser, LLC, a subsidiary of Baker Hughes.

## Technical Information

|                             |                                      |
|-----------------------------|--------------------------------------|
| Max Capacity (at 1/2" & 2") | 630 & 1320 acfh                      |
| Pressure Rating (MAOP)      | 25 psig                              |
| Available Connection Sizes  | 30LT & 45LT                          |
| Start Rate                  | 0.3cfh                               |
| Weight                      | 24 lbs                               |
| Pulse Outputs               | 2 Form A (NO)<br>1 Form B Alarm (NC) |
| Temperature Comp Range      | -40 to 140 F                         |
| AMR Compatibility*          | ltron, Sensus, L+G                   |
| Max Loop Voltage            | 8.2V                                 |
| Max Loop Amperage           | 10mA                                 |

\*Contact factory for additional guidance.

## Rated Capacity for 0.6 s.g. Gas

| Inlet Pressure (psig) | Differential (in. W.C.) | Capacity (scfh) |
|-----------------------|-------------------------|-----------------|
| 0.25                  | 1/2"                    | 630             |
| 0.25                  | 2"                      | 1320            |
| 1                     | 2"                      | 1340            |
| 2                     | 2"                      | 1390            |
| 5                     | 2"                      | 1515            |
| 10                    | 2"                      | 1710            |
| 15                    | 2"                      | 1890            |
| 20                    | 2"                      | 2010            |
| 25                    | 2"                      | 2160            |

## Traditional Diaphragm Rating

| Capacity | Differential (in. W.C.) |       |
|----------|-------------------------|-------|
|          | AC-630                  | D630  |
| 630      | 0.50"                   | 0.02" |
| 1320     | 2.00"                   | 0.76" |



www.dresserutility.com